



---

# CESEP ASBL

---

## **CENTRE FOR EUROPEAN SOCIAL AND ECONOMIC POLICY**

**Stefanos GRAMMENOS**

Rue de la Pacification, 65  
B-1000 BRUXELLES

E-Mail : [cesep@skynet.be](mailto:cesep@skynet.be)

Website: [www.cesep.eu](http://www.cesep.eu)

CESEP

1

### **Preliminary list of comparative indicator items for pilot**

## **INDICATORS OF DISABILITY EQUALITY IN EUROPE**

*Comparative data on a selection of quantitative implementation  
indicators*

November 2011

FOR  
**Academic Network of European Disability Experts  
ANED**

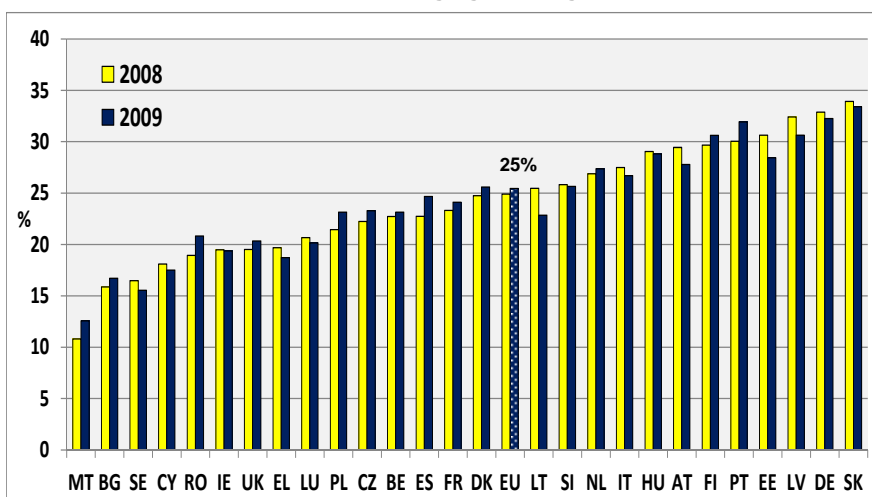
CESEP

2



## NUMBER OF PEOPLE WITH DISABILITIES

% of the same age group. Age 16+



EU-SILC 2008 & 2009

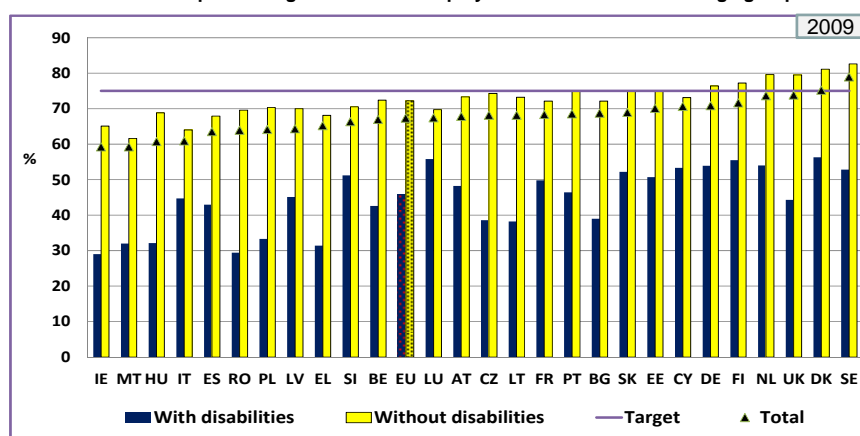
CESEP

3

## EMPLOYMENT RATE

Europe 2020: 75 % of the population aged 20-64 should be employed.

Number of persons aged 20 to 64 in employment as a % of the same age group



EU    Disabled: 46%    Non-Disabled: 72%    Total: 67%

EU-SILC 2009

CESEP

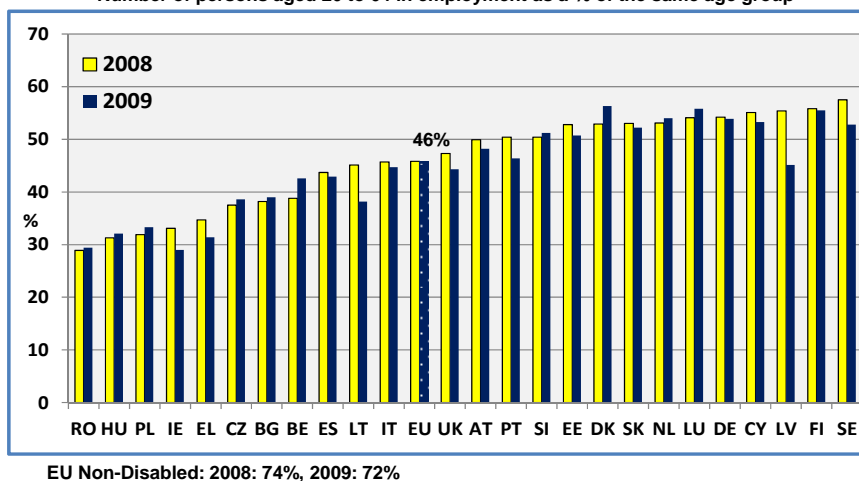
4



### PEOPLE WITH DISABILITIES: EVOLUTION OF THE EMPLOYMENT RATE

Europe 2020: 75 % of the population aged 20-64 should be employed.

Number of persons aged 20 to 64 in employment as a % of the same age group



EU Non-Disabled: 2008: 74%, 2009: 72%

EU-SILC 2008 & 2009

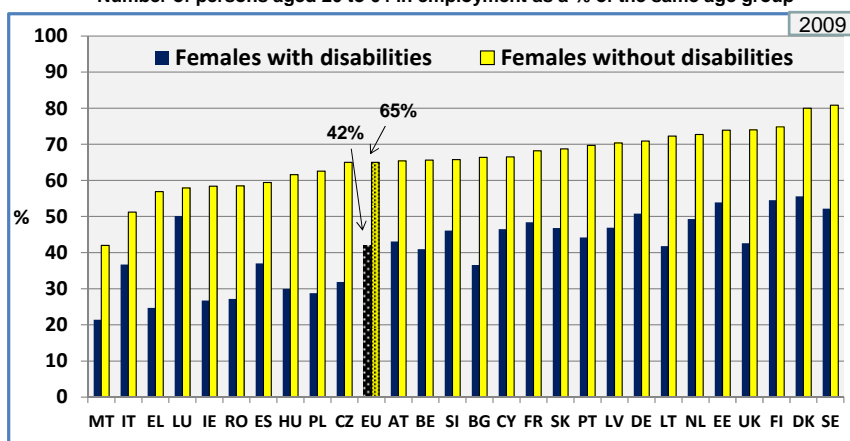
CESEP

5

### FEMALE EMPLOYMENT RATE

Europe 2020: 75 % of the population aged 20-64 should be employed.

Number of persons aged 20 to 64 in employment as a % of the same age group



EU Male Employment Rate: Disabled: 50%; Non-Disabled: 79%

EU-SILC 2009

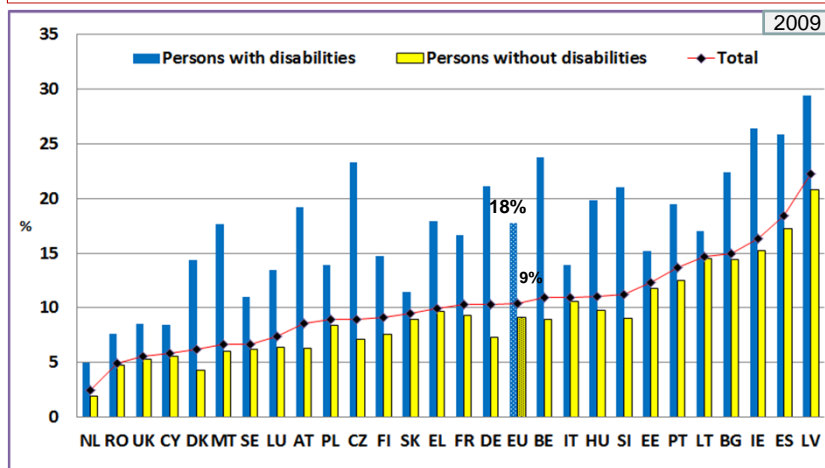
CESEP

6



## UNEMPLOYMENT RATE

Number of unemployed persons aged 20 to 64 as a % of the labour force (same age)



EU Female Unemployment Disabled: 17% Non-Disabled: 9% Total: 11%

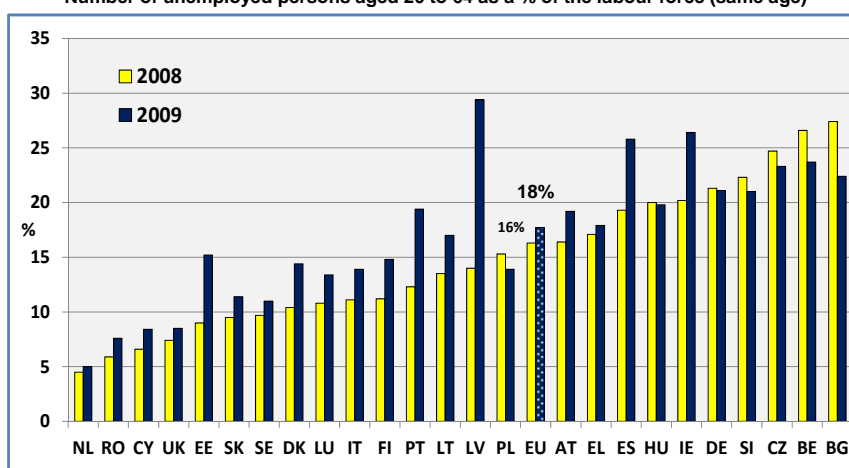
EU-SILC 2009

CESEP

7

## PEOPLE WITH DISABILITIES: EVOLUTION OF UNEMPLOYMENT RATE

Number of unemployed persons aged 20 to 64 as a % of the labour force (same age)



EU Non-Disabled 2008: 7% 2009: 9%

EU-SILC2008 & 2009

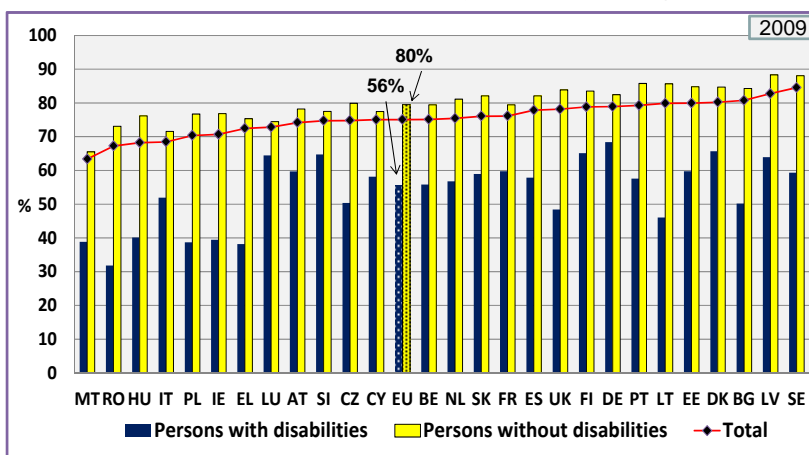
CESEP

8



### ACTIVITY RATE

Percent of the population which is employed or unemployed, aged 20-64



EU Female Activity

Disabled: 51%

Non-Disabled: 72%

Total: 68%

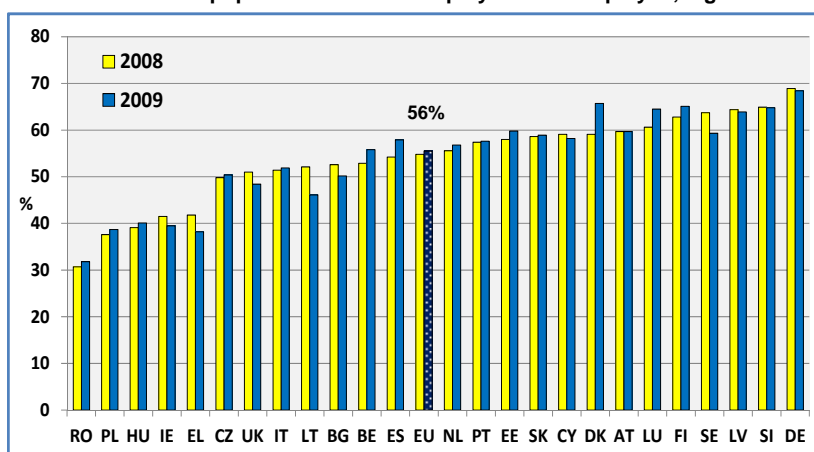
EU-SILC 2009

CESEP

9

### PEOPLE WITH DISABILITIES: EVOLUTION OF THE ACTIVITY RATE

Percent of the population which is employed or unemployed, aged 20-64



EU Non-Disabled

2008: 79%

2009: 79%

EU-SILC 2008 & 2009

CESEP

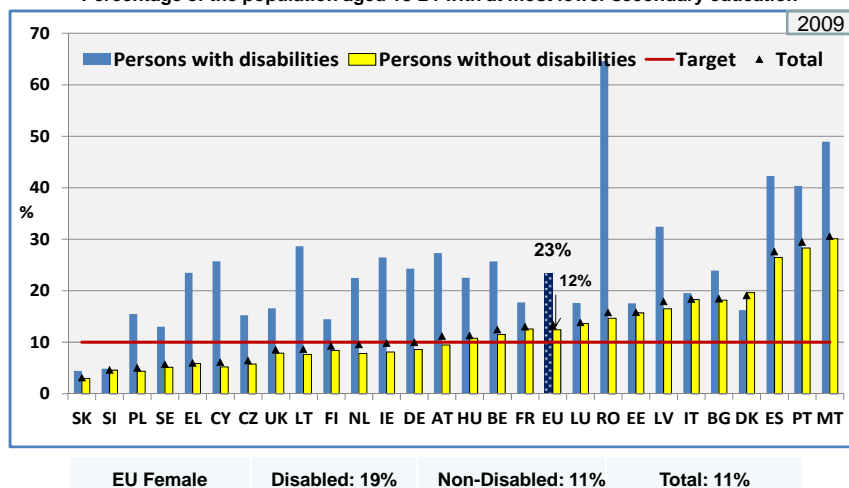
10



### EARLY LEAVERS FROM EDUCATION AND TRAINING

Europe 2020: 10 percent or less of early school leavers

Percentage of the population aged 18-24 with at most lower secondary education



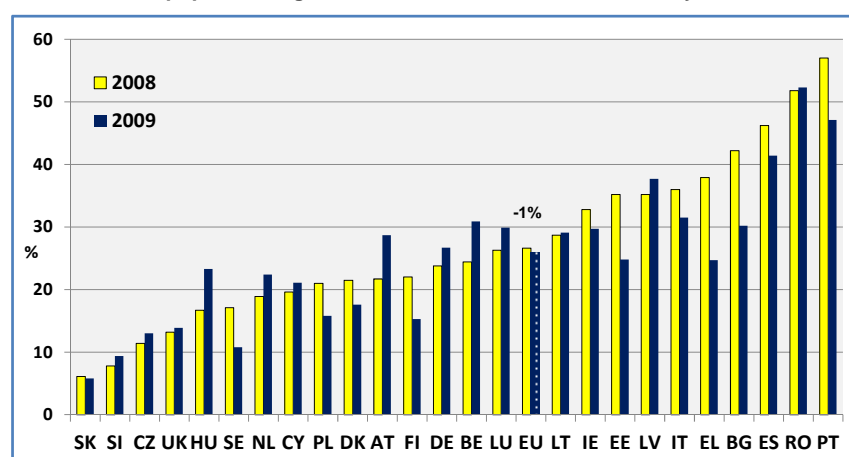
EU-SILC 2009

CESEP

11

### PEOPLE WITH DISABILITIES: EVOLUTION OF EARLY SCHOOL LEAVERS %

% of the population aged 18-29 with at most lower secondary education



EU Non-Disabled  
EU Disabled

2008: 14% 2009: 14%  
27% 26%

EU-SILC 2008 & 2009

CESEP

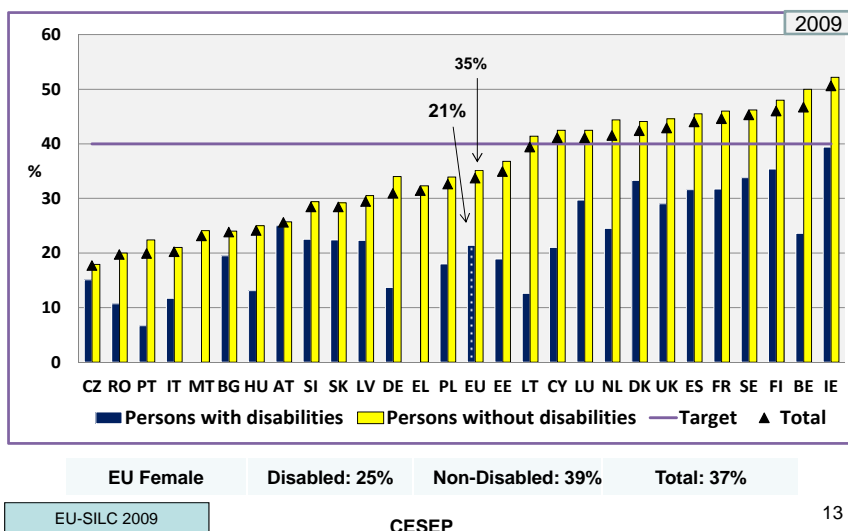
12



### PERSONS WHO HAVE COMPLETED A TERTIARY EDUCATION

Europe 2020: At least 40% with tertiary or equivalent education – Age 30-34

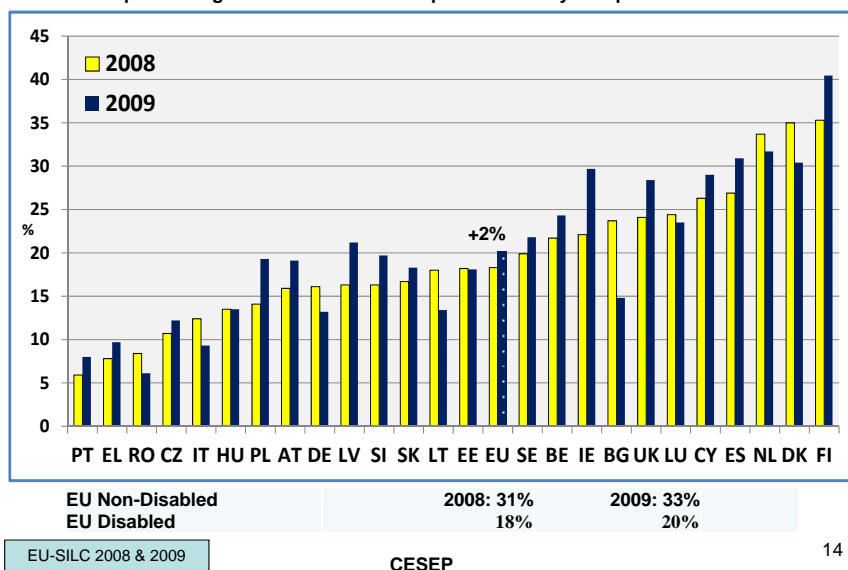
% of persons aged 30-34 who have completed a tertiary or equivalent education



13

### PEOPLE WITH DISABILITIES: % WITH TERTIARY EDUCATION IN 2008 & 2009

% of persons aged 30-39 who have completed a tertiary or equivalent education



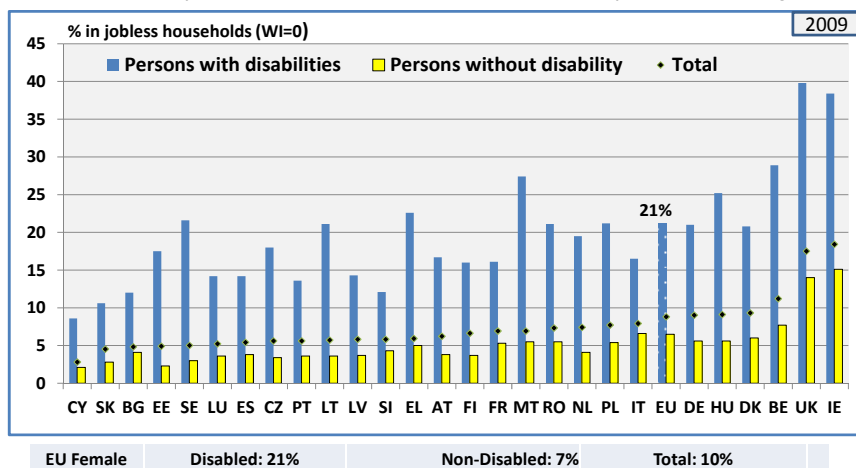
14



### PEOPLE LIVING IN HOUSEHOLDS WITH VERY LOW WORK INTENSITY

#### Europe 2020: component of indicator "population at risk of poverty or social exclusion"

Ratio between the number of months that all working age household members (18-64) have been working during the income reference year and the total number of months that could theoretically have been worked; Age 16-59



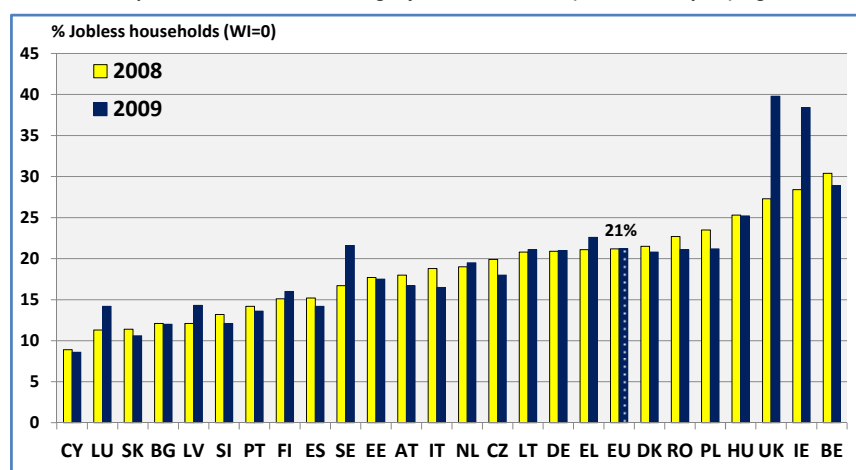
EU-SILC 2009

CESEP

15

### PEOPLE LIVING IN HOUSEHOLDS WITH VERY LOW WORK INTENSITY IN 2008 & 2009

Percent of persons with disabilities living in jobless households (Work intensity = 0), Age 16-59



EU-SILC 2008 &amp; 2009

CESEP

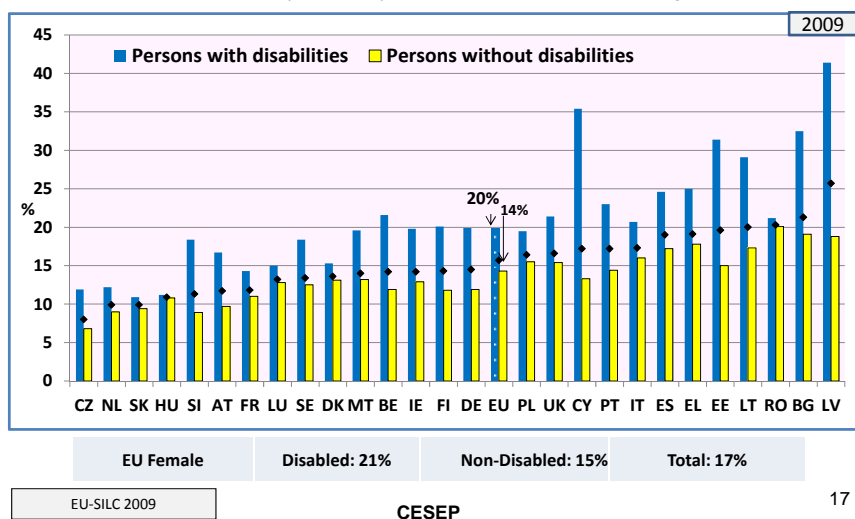
16



### PEOPLE AT-RISK-OF-POVERTY AFTER SOCIAL TRANSFERS

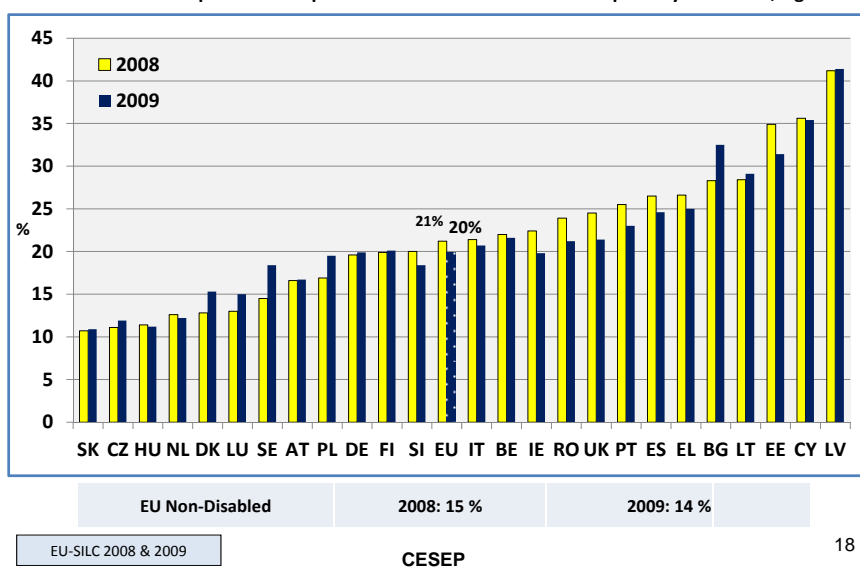
#### Europe 2020: component of indicator "population at risk of poverty or social exclusion"

Persons with an equivalised disposable income below the risk-of-poverty threshold, which is set at 60 % of the national median equivalised disposable income (after social transfers); Age 16+



### PEOPLE WITH DISABILITIES AT-RISK-OF-POVERTY AFTER SOCIAL TRANSFERS

Persons with an equivalised disposable income below the risk-of-poverty threshold, Age 16+





### SEVERELY MATERIALLY DEPRIVED PEOPLE

Europe 2020: component of indicator "population at risk of poverty or social exclusion"

Enforced lack of at least four out of nine material deprivation items.

The nine items considered are:

1. Arrears on mortgage or rent payments, utility bills, ... or other loan payments;
2. Capacity to afford paying for one week's annual holiday away from home;
3. Capacity to afford a meal with meat, chicken, fish ... every second day;
4. Capacity to face unexpected financial expenses;
5. Household cannot afford a telephone (including mobile phone);
6. Household cannot afford a colour TV;
7. Household cannot afford a washing machine;
8. Household cannot afford a car and
9. Ability of the household to pay for keeping its home adequately warm.

Specificity of the indicator: Similar across Member States (unlike Financial poverty)

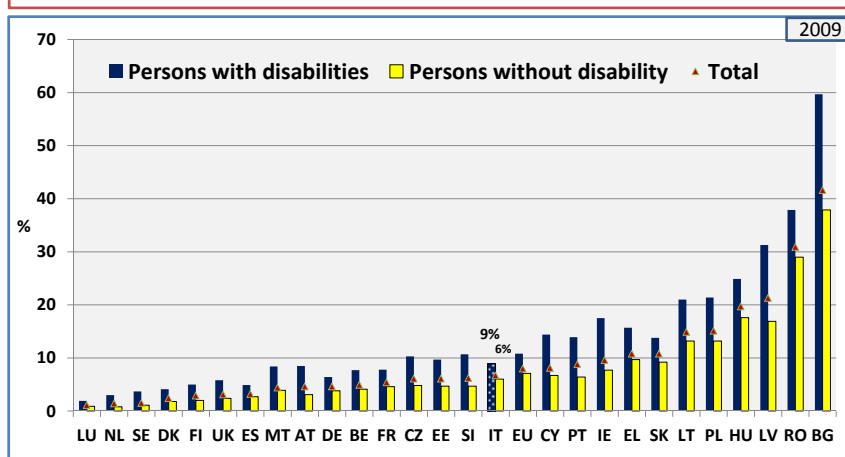
Commission

CESEP

19

### SEVERELY MATERIALLY DEPRIVED PEOPLE

Percent of severely materially deprived persons , Age 16+



EU Female

Disabled: 11%

Non-Disabled: 7%

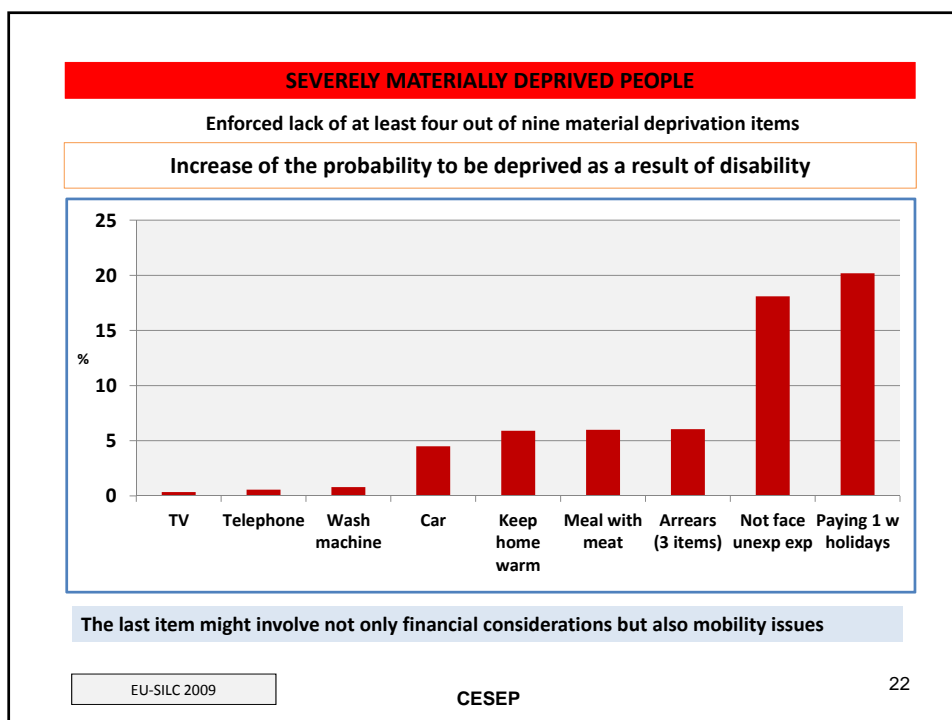
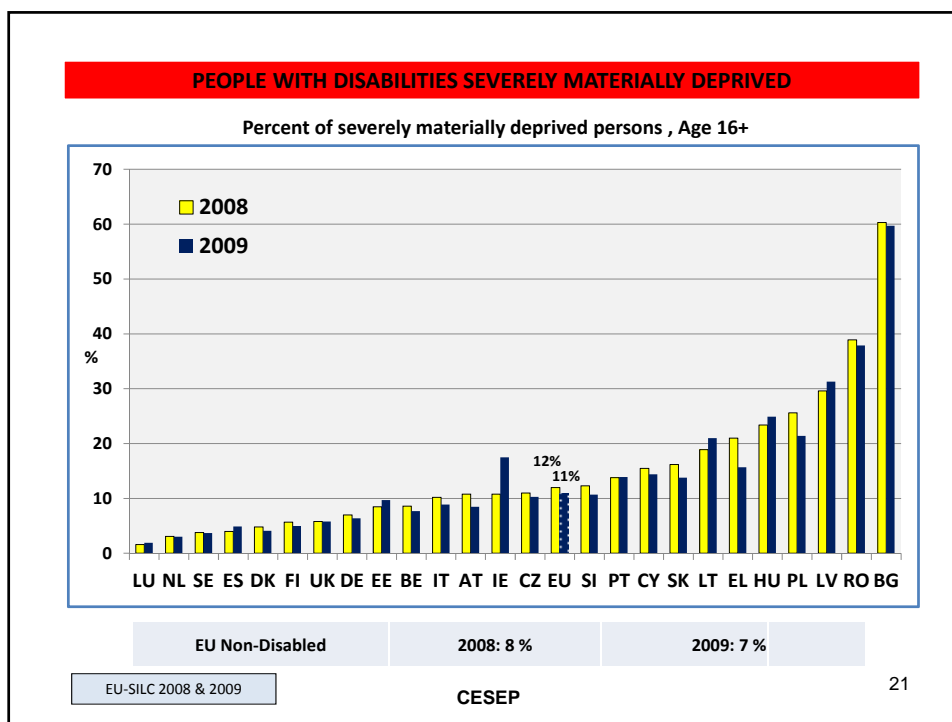
Total: 8%

EU-SILC 2009

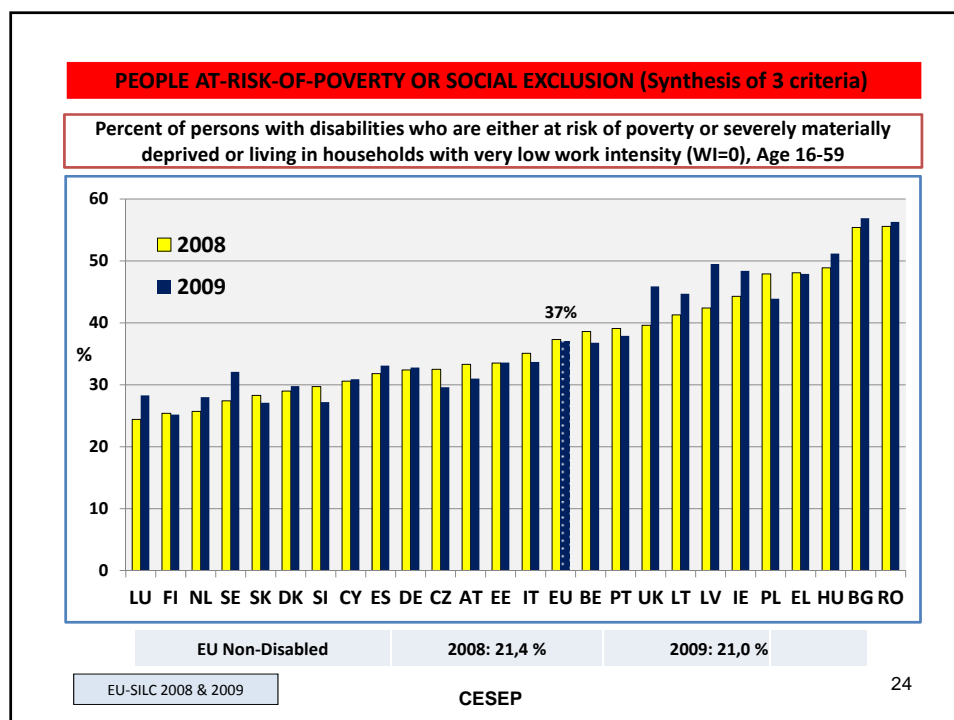
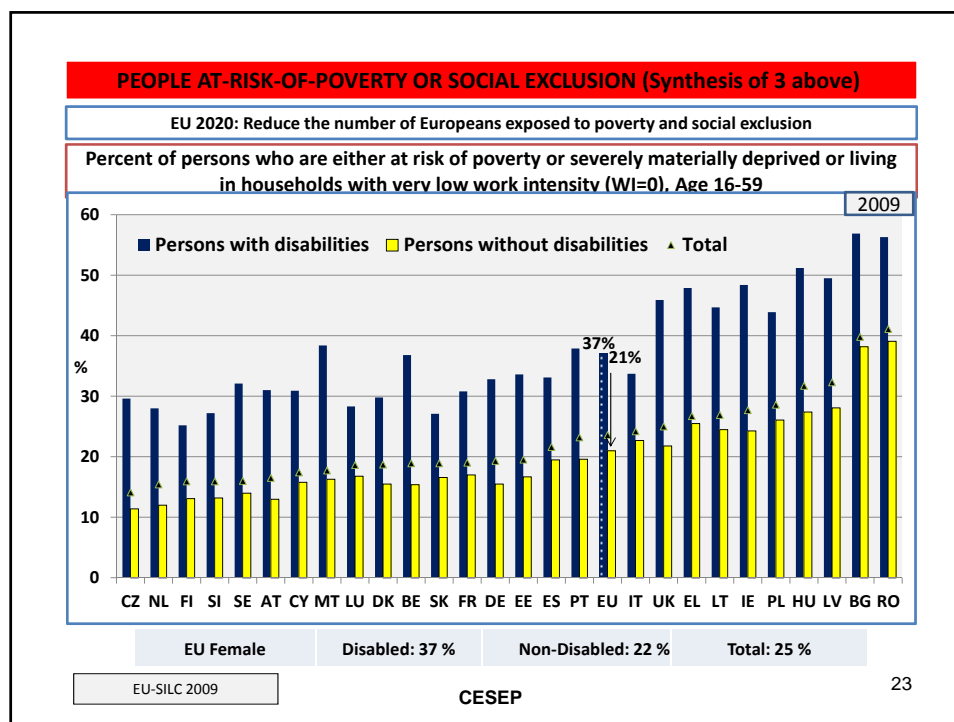
CESEP

20





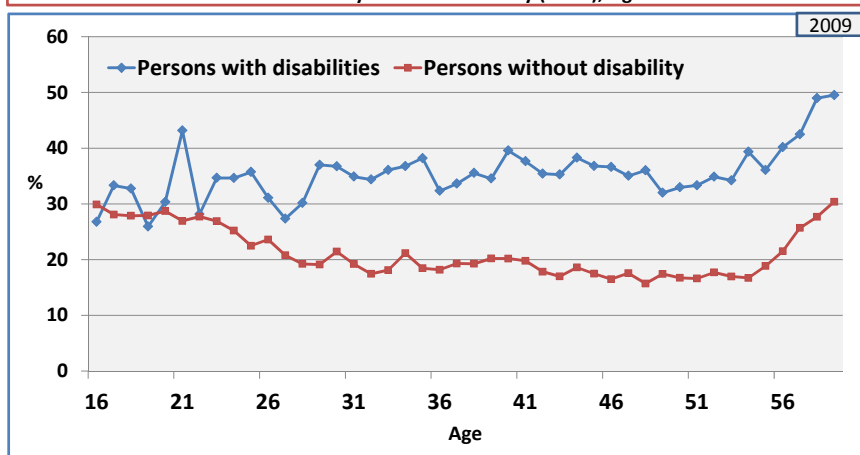






### PEOPLE AT-RISK-OF-POVERTY OR SOCIAL EXCLUSION (Synthesis of 3 above)

Percent of persons who are either at risk of poverty or severely materially deprived or living in households with very low work intensity (WI=0), Age 16-59



Importance of Employment during active life and Unemployment of Older workers

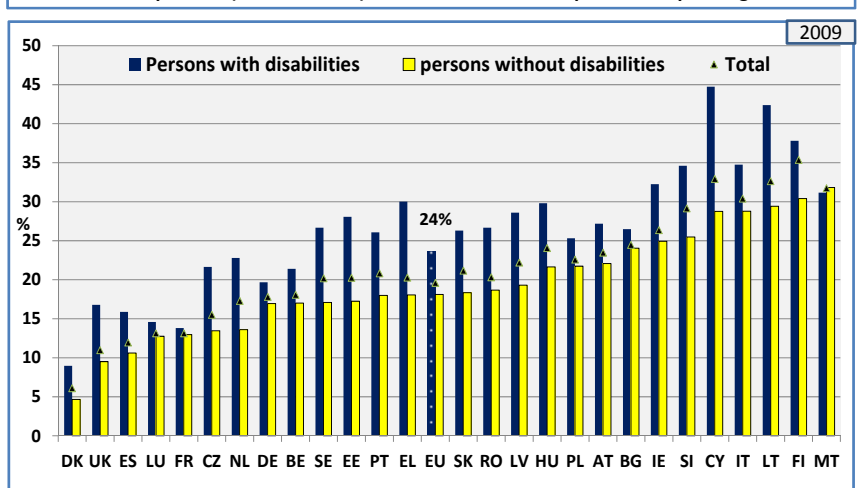
EU-SILC 2008 & 2009

CESEP

25

### ACCESSIBILITY OF PUBLIC TRANSPORT

Percent of persons (in households) with difficult access to public transport, Age: 16+



EU Female

Disabled: 24 %

Non-Disabled: 18 %

Total: 20 %

EU-SILC 2009

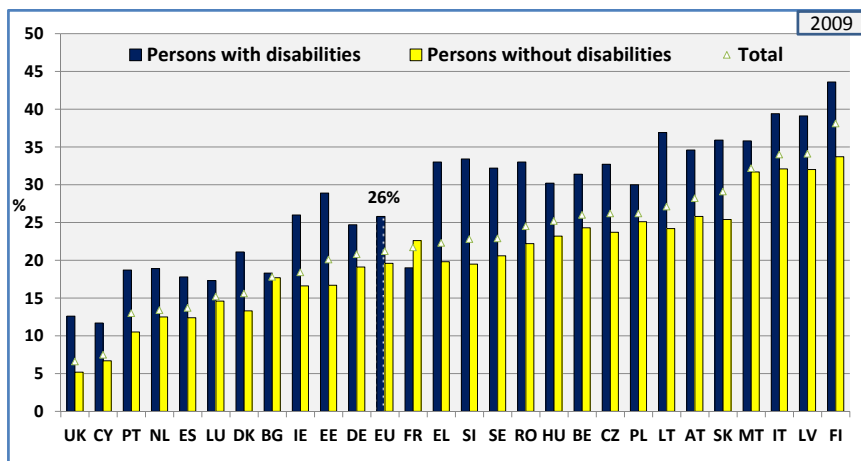
CESEP

26



### ACCESSIBILITY OF POSTAL OR BANKING SERVICES

Percent of persons (in households) with difficult access to postal or banking services, Age: 16+



EU Female

Disabled: 26 %

Non-Disabled: 20 %

Total: 21 %

EU-SILC 2009

CESEP

27

### Data sources

#### EUROSTAT

1. EUSILC UDB 2008 – version 3 of March 2011
2. EUSILC UDB 2009 – version 1 of March 2011

INDICATORS OF DISABILITY EQUALITY IN EUROPE  
Comparative data on a selection of quantitative implementation indicators

CESEP

28